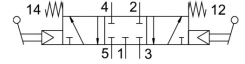
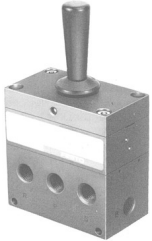


Toggle lever valve

H-5/3-1/4

Part number: 4577

FESTO



Data sheet

Feature	Value
Valve function	5/3, closed
Actuation type	Manual
Standard nominal flow rate	680 l/min
Pneumatic working port	G1/4
Operating pressure	0.2 MPa ... 1 MPa
Operating pressure	2 bar ... 10 bar
Reset method	Mechanical spring
Nominal width	7 mm
Type code	H
Sealing principle	Soft
Type of control	Pilot-controlled
Flow direction	Non-reversible
Symbol	00991698
Ambient temperature	-10 °C ... 60 °C
Product weight	1060 g
Pneumatic connection 1	G1/4
Pneumatic connection 2	G1/4
Pneumatic connection 3	G1/4